

# Flycatcher Katavi Camp

*Katavi is remote, wild and simply beautiful; it is Africa as it must have been a century ago! You will come across absolutely undisturbed nature and enjoy the amazing fauna that the park has to offer.*

*Situated in the central Ikuu area of the park and overlooking the Katuma River, the seasonal Flycatcher Katavi Camp is the right place for a true wilderness experience. All tents, including the big dining tent with open sides, provide wonderful views over Katuma River. The tranquil atmosphere in the camp and the animal sounds at night will top your stay in this pristine wilderness.*



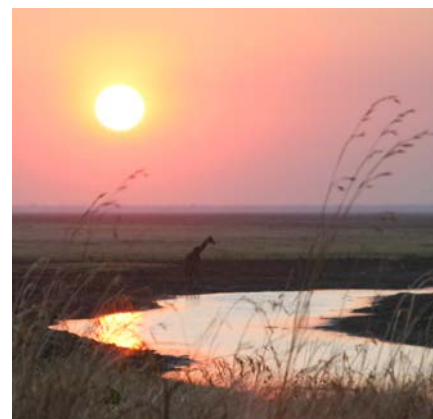
## The Camp

In Flycatcher Katavi Camp you will be staying in a spacious tent. The tents are equipped with comfortable beds with Nordic bedding, canvas cupboards, luggage racks, safari chairs and electric lights generated from solar panels. Each tent consists of an en

suite bathroom with a flush toilet and a bucket shower where hot water will be provided daily. Screened windows on all sides of the tent allow you to encounter nature at its closest. All six tents are arranged in the shade of trees and have superb views over the Katuma River. You can enjoy watching animals coming for water from the privacy of your veranda.

The dining tent with open sides provides a perfect location for all meals, offering a splendid view across the river banks of the Katuma River. Our experienced cooks serve excellent meals with a good variety of fresh food products.

After an adventurous day you can relax and enjoy a drink at the campfire.





## Activities

The main activities are game drives in the park. You can go on two half day game drives and have lunch at the camp or on full day game drives with picnic lunch.

Also possible are one to two hours guided walking safaris which need to be arranged with the park wardens beforehand.

Typical pictures of Katavi are: big herds of buffaloes, zebras, topis, elephants in small families and pools with hippos and crocodiles. Roan antelope and sable antelope are the highlights of the park.



Going on a game drive in Katavi means discover, there are still places where no one else has been before. You will come across absolutely undisturbed nature and enjoy the amazing fauna the park has to offer.



### For further information and bookings please contact:

Flycatcher Safaris, P.O. Box 591, Arusha, Tanzania

[www.flycat.com/camps](http://www.flycat.com/camps)

E-Mail: [flycat@flycat.com](mailto:flycat@flycat.com)

Phone: +255 73 297 94 86

## Katavi National Park

Katavi National Park is situated in the south west of Tanzania and covers an area of 4471 km<sup>2</sup>, making it the third largest national park in Tanzania.

The park is situated on a high, wide flood plain and its main features are the watery grassy plains to the north, palm-fringed seasonal Lake Chada in the southeast and the Katuma River. Katavi boasts Tanzania's densest concentration of both crocodiles and hippos. Katavi's lions and leopards have no shortage of prey: impala, eland, topi, zebra and big herds of buffaloes wandering the short grass plains. With a bit of luck you can also see sable and roan antelopes. A kaleidoscope of more than 400 bird species flits across the trees, riverbanks, swamps and palm groves while flotillas of pelican cruise the lakes.

It is during the dry season, when the floodwaters retreat, that is when Katavi truly comes into its own. The Katuma River, reduced to a muddy trickle, forms the only source of drinking water for miles around. Katavi's most singular wildlife spectacle is provided by its hippos. Towards the end of the dry season, up to 200 individuals might flop together in any riverine pool of sufficient depth.

## Location and getting there

Situated in south west of Tanzania, 205 km north of Sumbawanga.

Longitude: 6°54'07.30" S

Latitude: 31°09'49.55" E

Altitude: 927 m above sea level

The easiest way to access the park is by flight. There are several air charter companies offering scheduled flights twice a week to Katavi from Arusha, Dar es Salaam, Mwanza, Serengeti, Mahale and Ruaha. The transfer from the airstrip to the camp takes no more than 10 minutes.